

# Where We Want to Be

Through the CEEP development process, a vision, goals and targets will be established that describe where we want Cumberland County to be in 2030 and 2050 with respect to energy efficiency, energy sources, and our impact on climate change. This process will take place from May 2024 to December 2024 and will involve the Municipality of the County of Cumberland staff and Council, key stakeholders and community members.

# How to Get There

The CEEP will define strategies, policies and measures that will help the community reach its vision, goals and targets. Although the CEEP will focus on policies and measures for the municipal government to undertake, it will be imperative for residents, businesses and other organizations in Cumberland County to do their part in achieving the vision, goals and targets.

What can residents, businesses and organizations do now?



Renovate old buildings to be energy efficient

Replace old furnaces and hot water tanks



Install solar panels for hot water, geo-exchange systems for heat, or other alternative energy systems  
Walk, bike or ride transit whenever possible



Make sure your next vehicle is fuel efficient, or get a hybrid or electric vehicle



Shop locally as much as possible  
Choose products with minimal or reusable packaging



# More Information

For more information about the Community Energy and Emissions Plan, please visit our CEEP webpage at

<https://www.cumberlandcounty.ns.ca/energy-and-emissions-plan.html>

or contact:

**Steve Ferguson**

Senior Advisor,  
Climate Change and  
Special Projects

sferguson@  
cumberlandcounty.ns.ca

**Glen Boone**

Director,  
Development and  
Planning

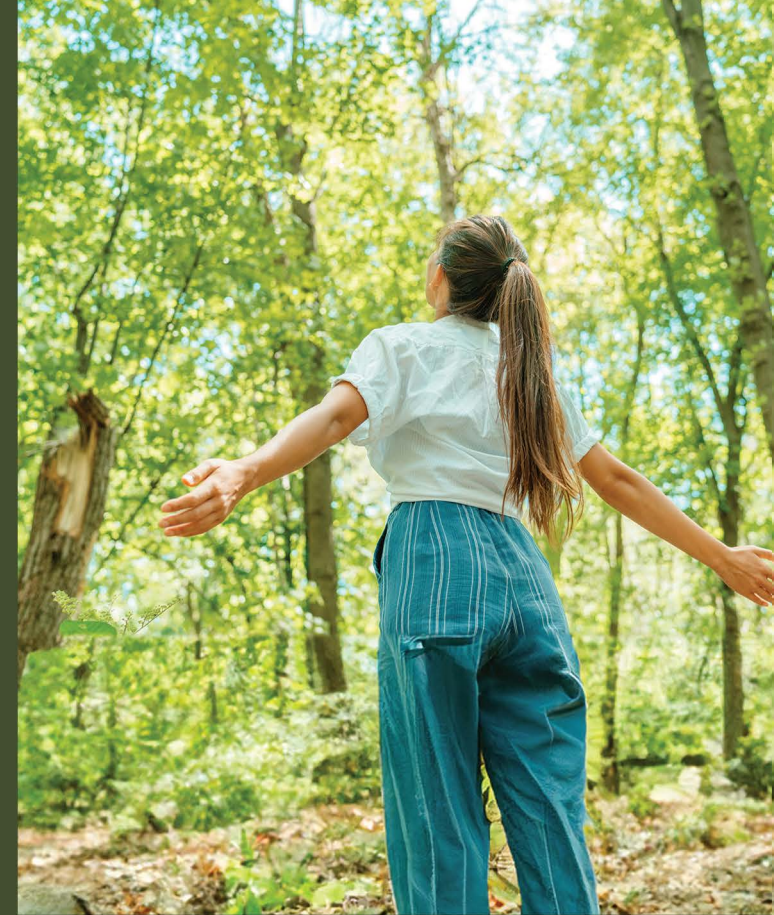
gboone@  
cumberlandcounty.ns.ca



### WE WANT TO HEAR FROM YOU!

Your feedback is essential. We invite you to share your thoughts, concerns, and ideas about energy use and sustainability in our community through our survey, which can be accessed at the link and/or QR code.

Survey link: <https://www.surveymonkey.com/r/YWLSCT9>



# COMMUNITY ENERGY & EMISSIONS PLAN

